

# TUBAGES DE REVÊTEMENT LS

## LS CASINGS

### > LES TUBES / CASING

Désignation	Réf.	Poids (Kg)	Ø ext. (mm)	Ø int. (mm)	Ø int. raccord (mm)	Nbre filets / pouce
<i>Description</i>	<i>Part N°</i>	<i>Weight (Kg)</i>	<i>OD (mm)</i>	<i>ID (mm)</i>	<i>ID couling (mm)</i>	<i>TPI</i>
95 LS x 500	60.341	9.2	95.0	81.0	77.0	4
95 LS x 1000	60.342	16.9	95.0	81.0	77.0	4
95 LS x 1500	60.343	25.6	95.0	81.0	77.0	4
95 LS x 2000	60.344	33.3	95.0	81.0	77.0	4
95 LS x 3000	60.345	47.7	95.0	81.0	77.0	4
114 LS x 500	60.421	10.2	114.3	101.6	98.0	4
114 LS x 1000	60.422.10	18.6	114.3	101.6	98.0	4
114 LS x 1500	60.423	26.8	114.3	101.6	98.0	4
114 LS x 2000	60.424	35.4	114.3	101.6	98.0	4
114 LS x 3000	60.425	52.2	114.3	101.6	98.0	4
140 LS x 500	60.426	14.3	139.7	125.7	120.5	4
140 LS x 1000	60.515	26.0	139.7	125.7	120.5	4
140 LS x 1500	60.516	37.6	139.7	125.7	120.5	4
140 LS x 2000	60.518	49.3	139.7	125.7	120.5	4
140 LS x 3000	60.517	72.6	139.7	125.7	120.5	4
168 LS x 500	60.3065-	17.5	168.3	153.6	149.0	4
168 LS x 1000	32.3068-	31.7	168.3	153.6	149.0	4
168 LS x 1500	32.3064	45.8	168.3	153.6	149.0	4
168 LS x 2000	32.3067	60.0	168.3	153.6	149.0	4
168 LS x 3000	32.3066	88.3	168.3	153.6	149.0	4
194 LS x 500	32.3070	21.0	193.7	178.4	174.4	4
194 LS x 1000	32.3077	38.5	193.7	178.4	174.4	4
194 LS x 1500	32.3078	56.0	193.7	178.4	174.4	4
194 LS x 2000	32.3073-	73.5	193.7	178.4	174.4	4
194 LS x 3000	32.3074-	108.5	193.7	178.4	174.4	4
220 LS x 500	32.3080	25.0	219.1	203.6	200.0	4
220 LS x 1000	32.3081	46.0	219.1	203.6	200.0	4
220 LS x 1500	32.3082	67.3	219.1	203.6	200.0	4
220 LS x 2000	32.3083-	88.5	219.1	203.6	200.0	4
220 LS x 3000	32.3084-	131.0	219.1	203.6	200.0	4

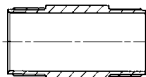


# TUBAGES DE REVÊTEMENT LS

## LS CASINGS

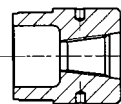
### > LES ACCESSOIRES / ACCESSORIES

#### > RACCORDS POUR TUBES ADAPTORS FOR CASING



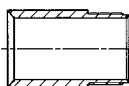
Ø	Réf.	Poids (Kg)
Ø	Part N°	Weight (Kg)
95 LS	45.003	3.40
114 LS	45.004	3.80
140 LS	45.006	5.50
168 LS	45.005-	6.80
194 LS	32.3100-	7.00
220 LS	32.3101	10

#### > TÊTES DE TUBAGE FILETÉES THREADED DRIVE HEADS



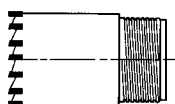
Ø	Réf.	Fil. FE	Poids (Kg)
Ø	Part N°	Box thread	Weight (Kg)
95 LS	70.622.50	2"3/8 REG	5.2
114 LS	70.622.40	2"3/8 REG	7.1
140 LS	70.622.30	2"3/8 REG	12
168 LS	32.616	3"1/2 REG	16.7
194 LS	70.622.70-	3"1/2 REG	24.6
220 LS	70.622.80-	3"1/2 REG	31.8

#### > SABOTS COUPANTS ACIER CUTTING SHOES



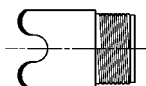
Ø	Réf.	Poids (Kg)
Ø	Part N°	Weight (Kg)
95 LS	70.859.10-	2.70
114 LS	70.859.00-	3.00
140 LS	70.859.20-	4.00
168 LS	70.859.30-	5.30
194 LS	70.859.40-	6.2
220 LS	70.589.50-	7.00

#### > SABOTS A PRISMES T.C. INSERTS CASING SHOES



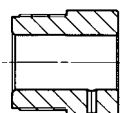
Ø	Réf.	Ø ext.	Poids (Kg)
Ø	Part N°	OD	Weight (Kg)
95 LS	36.220.501	96	3.0
114 LS	36.220.401	118	3.4
140 LS	36.220.301	144	4.5
168 LS	36.220.201.10	173	5.8
194 LS	36.220.101.50	196	6.9
220 LS	36.220.101	224	7.6

#### > SABOTS COUPANTS CARBURES CARBIDE REINFORCED CUTTING SHOES



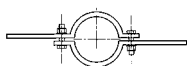
Ø	Réf.	Poids (Kg)
Ø	Part N°	Weight (Kg)
95 LS	36.220.500	3.00
114 LS	36.220.400	3.50
140 LS	36.220.300.10	4.10
168 LS	36.220.200	5.10
194 LS	36.220.150	6.00
220 LS	36.220.100	6.70

#### > TÊTES DE FRAPPE PERCUSSION DRIVE HEADS



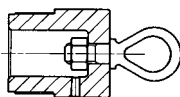
Ø	Réf.	Poids (Kg)
Ø	Part N°	Weight (Kg)
95 LS	70.623.10-	5.60
114 LS	70.623.20-	8.40
140 LS	70.623.00-	11.00
168 LS	70.623.30-	14.00
194 LS	70.620.40-	16.00
220 LS	70.623.50-	19.00

#### > COLLIERES DE TUBAGE CASING CLAMPS



Ø	Réf.	Poids (Kg)
Ø	Part N°	Weight (Kg)
95 LS	32.3048-	3.00
114 LS	32.3047-	3.50
140 LS	32.3049-	4.10
168 LS	32.3044-	5.10
194 LS	32.3045-	6.00
220 LS	32.3087-	6.70

#### > TÊTES DE LEVAGE LIFTING PLUGS



Ø	Réf.	Poids (Kg)
Ø	Part N°	Weight (Kg)
95 LS	70.862-	5.00
114 LS	70.863-	7.00
140 LS	70.864-	12.00
168 LS	70.865-	16.50
194 LS	70.866-	24.50
220 LS	70.867-	31.00